



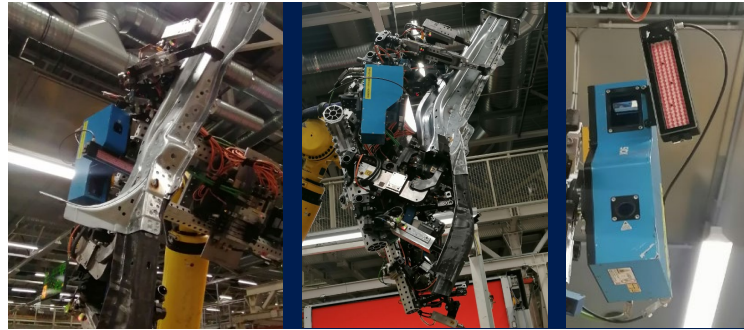
D-Vision

Longmember automatic pick from rack

Before



After



Description

- An operator loaded manually the parts, one-by-one.
 - Ergonomically challenging station due to size and weight to be maneuvered
 - Capacity installed was 37 JPH
- Installation of 2 cameras (one per robot).
 - Installation of 2 logistic racks' bays for automatic line-feeding.

Results and improvements

After this upgrade, the line was able to reach 45JPH and manpower optimization. Additionally, the ergonomic concern was solved.

	Facts
Area	Bodyshop 9
Saving	-4PJ
Investment	27T €
Implementation date	2022